

NULLA



Australian Indigenous Made Office Seating



NULLA INDIGENOUS OFFICE SEATING 2023

'ABORIGINAL LANGUAGE EDUCATION THROUGH OFFICE FURNITURE'



Stuart & Dunn Office Choice
(02) 4966 0554
furniture@stuartanddunn.com.au
www.stuartanddunn.com.au

NULLA AUSTRALIAN INDIGENOUS OFFICE SEATING

At NULLA, we specialise in the supply and design of Australian Made Indigenous Made commercial office seating. With over 60 years' combined experience, our team is dedicated to winning our customers' trust through a commitment to excellence in everything we do.

Our Indigenous office seating range - "The Butchulla Collection" is range of Aboriginal named office chairs with a English translation, The Butchulla Collection celebrates Aunty Jeannie Bell a community linguist who collated the Butchulla Language Dictionary and known across Australia for her effort to revive and preserve Aboriginal languages.



We take pride in our traditional Australian heritage and uplifting the Australian Indigenous community economically and through the preservation of culture.

We engage First Nations Artists and designers through out the process of creating Indigenous motif's or themed spaces that have connection to culture and country. We prioritise the use of our Australian Indigenous Manufacturers as our commitment to providing economic

Our Managing Director, Ramone Close, is a proud First Nations man connected to Githabul (Woodenbong/Warwick, NSW) country, Quandamooka (Stradbroke Island, QLD) country, and Butchulla (Fraser Island, QLD) country.

Ramone's heritage and journey is what drives NULLA's mission to become the preferred Indigenous supplier of office furniture, office fit-outs, and office supplies company in Australia.



Butchulla Collection

'Aboriginal Language Education Through Office Furniture'

NULLA



Goonyam (Moreton Bay Pine)



Djoowai (Stringy-bark Tree)



Winam (Padanus Tree)



Wombai (Black Myrtle Tree)



Djaga (Grass Tree)



Djomba (Red Gum Tree)



Yulou Work Mesh (Silky Oak Tree)



Biringan (Bottle Tree)



Bilai (Swamp Oak Tree)



Yulou (Silky Oak Tree)



Yulou Synchro (Silky Oak Tree)



Dee (Tallow Wood Tree) Range

We Support Australian Made
Our high-quality chairs are built in Australia by Australians!

Environmental Choice

Sustainable solutions for
planet and people.



We prioritise minimising our impact and sustainability by being independently certified for Quality and Environment.



**YINDI
BLACK
FABRIC**

WATER RESISTANT

NEW

Our stock Black house fabric features water-repellent, wipeable durable, helps repel liquids and block stains without changing the look and feel of the fabric, meaning the surface can be wiped clean before the mess sinks in.



**ANTI
MICROBIAL**



**TWO-WAY
STRETCH**



DURABLE



WIPEABLE

Djomba (Red Gum Tree)



Djomba (The Red Gum Tree) was a valuable resource for Australian Aboriginal people. They used it for a variety of purposes, such as building shelters, making tools and weapons, and using the leaves and bark for traditional medicine. Additionally, they used the red gum tree for ceremonial purposes, as a food source, and as firewood.



USER	Up to 120kg
MECH	3 Lever Standard
BACK	Manual spine High Back 450W x 500H
SEAT	490W x 465D Seat Height from 420 to 520
CERT.	AFRDI Level 6, GECA, Fire Retardant, Anti-Bacterial
FABRIC	Indigenous Designed Fabric or Black.
DISPATCH	5 to 10 working days.



Djoowai (Stringy-Bark Tree)



Australian Aboriginal people used Djoowai (Stringybark Trees) for various purposes. The fibrous inner bark was used to make rope, baskets, mats, and even clothing. Additionally, the bark was used as a building material for shelters, and the leaves were used in traditional medicine.



USER	Up to 135kg
MECH	3 Lever Heavy Duty
BACK	High Back - Manual Spine Back 440W x 390H
SEAT	490W x 465D Seat Height from 420 to 530
CERT.	AFRDI Level 6, GECA, Fire Retardant, Anti-Bacterial
FABRIC	Aboriginal Designed Fabric or Black.
DISPATCH	5 to 10 working days.



Winam (Pandanus Tree)



Australian Aboriginal people used Winam (Pandanus Trees) for a wide range of purposes. The leaves of the tree were used to make baskets, mats, and even clothing, while the fruit and seeds were consumed as a food source. Additionally, the tree was used for medicinal purposes, and the strong, durable wood was sometimes used to make spears and digging sticks. The Winam (Pandanus Tree) was also culturally significant to some Aboriginal groups, and played a role in traditional stories and ceremonies.



USER	Up to 160kg
MECH	3 Lever Super Heavy
BACK	High Back - Manual Spine Back 520W x 490H
SEAT	490W x 465D Seat Height 420 to 530
CERT.	AFRDI Level 6, GECA, Fire Retardant, Anti-Bacterial
FABRIC	Aboriginal Designed Fabric or Black.
DISPATCH	5 to 10 working days.



Wombai (Myrtle Tree - Black)



Australian Aboriginal people used Wombai (Black Myrtle Trees) for a variety of purposes. The bark and leaves of the tree were used in traditional medicine to treat a range of ailments, such as skin conditions and respiratory infections. Additionally, the strong, durable wood was used to make a variety of tools and weapons, such as spears and shields. The tree was also significant in some Aboriginal cultural traditions and stories.



- USER** Up to 135kg
- MECH** 3 Lever - Standard
- BACK** Manual spine
Back 450W x 500H
- SEAT** 490W x 465D
- CERT.** AFRDI Level 6, GECA, Fire Retardant, Anti-Bacterial
- FABRIC** Aboriginal Designed Fabric or Black.
- DISPATCH** 5 to 10 working days.



Djaga (Grass Tree)



Australian Aboriginal people used Djaga (Grass Trees) (*Xanthorrhoea* spp.) for a variety of purposes. The resin was used as a glue or adhesive, while the young shoots were sometimes consumed as a food source. The leaves and stems of the grass tree were also used to make a variety of tools and weapons, such as spears and digging sticks. Additionally, the Djaga (Grass Tree) had cultural and spiritual significance to some Aboriginal groups and was featured in traditional stories and ceremonies.



- USER** Up to 135kg
- MECH** Synchro - T718
- BACK** Back 490W x 500H
- SEAT** 490W x 465D
- CERT.** AFRDI Level 6, GECA, Fire Retardant, Anti-Bacterial
- FABRIC** Aboriginal Designed Fabric or Black.
- DISPATCH** 5 to 10 working days.



Birimgan (Bottle Tree)



The Birimgan (Bottle tree) is traditionally used by Australian Aboriginal people as a food source and for making rope and twine suitable for the production of strong fishing lines and nets. It is also useful in the making of baskets and other woven goods. The seeds of the Birimgan (Bottle Tree) may be eaten when roasted, either ground into a flour or consumed without modification.

The flowers and roots may also be eaten.



- USER** Up to 120kg
- MECH** 3 Lever - Standard
- BACK** Ratchet spine adjustment
Back 450W x 500H
- SEAT** 490W x 465D
Seat Height From 420 to 530
- CERT.** AFRDI Level 6, GECA, Fire Retardant, Anti-Bacterial
- FABRIC** Aboriginal Designed Fabric or Black.
- DISPATCH** 5 to 10 working days.



Bilai (Swamp Oak Tree)



Australian Aboriginal people have traditionally used the Swamp Oak tree (*Casuarina cunninghamiana*) for a variety of purposes. They utilized the long, slender branches to create tools such as spears and digging sticks, essential for hunting and gathering. The dry wood of the Swamp Oak served as valuable firewood, providing heat for cooking, warmth, and signaling. Aboriginal communities collected the seed cones to grind into flour, which could be used to make traditional bread or mixed with water for a nutritious paste. Additionally, the Swamp Oak tree held cultural and spiritual significance, often featuring in Dreaming stories, ceremonies, and rituals.



- USER** Up to 120kg
- MECH** 3 Lever - Standard
- BACK** Manual spine
Back 450W x 500H
- SEAT** 490W x 465D
Seat Height From 420 to 530
- CERT.** AFRDI Level 6, GECA, Fire Retardant, Anti-Bacterial
- FABRIC** Aboriginal Designed Fabric or Black.
- DISPATCH** 5 to 10 working days.



Yulou (Silky Oak Tree)



The Yulou (Silky Oak Tree) had many versatile properties in which Australian Aboriginal people traditionally used, including making a sugary drink from silky oak flowers, dipping the whole flowerheads into water to wash the nectar off. The plant was also used to treat sore throats, earache, chest problems, flu and toothache. Additionally the prized wood was used for tools.



- USER** Up to 135kg
- MECH** 3 Lever - Heavy Duty
- BACK** Adjustable Lumbar
450W x 500H
- SEAT** 490W x 465D
Seat Height From 420 to 530
- CERT.** AFRDI Level 6 rate loaded, GECA,
- FABRIC** Aboriginal Designed Fabric or Black.
- DISPATCH** 5 to 10 working days.



Yolou Sync (Silky Oak Tree)



The Yolou (Silky Oak Tree) had many versatile properties in which Australian Aboriginal people traditionally used, including making a sugary drink from silky oak flowers, dipping the whole flowerheads into water to wash the nectar off. The plant was also used to treat sore throats, earache, chest problems, flu and toothache. Additionally the prized wood was used for tools.



USER	Up to 135kg
MECH	Synchro - Standard
BACK	450W x 500H
SEAT	490W x 465D
CERT.	GECA, Supply Nation
FABRIC	Aboriginal Designed Fabric or Black.
DISPATCH	5 to 10 working days.



Goonyam (Moreton Bay Pine)



Indigenous Australians warmed the sap of the Goonyam (Moreton Bay Pine) with their fingers and used it as a glue to fasten axe heads to hands. The timber was also used to make boomerangs and coolamons. Early European settlers used the timber for the masts of tall ships. Goonyam (Moreton Bay Pine) was actually the first export sent from Brisbane to England. The timber was also highly sought after for housing and furniture construction.



USER Up to 120kg
MECH 3 Lever - Standard
BACK Manual spine
 Back 440W x 390H



SEAT Standard Seat 490W x 465D
 Large Seat 420W to 530D
CERT. AFRDI Level 6, GECA, Supply Nation
FABRIC Aboriginal Designed Fabric or Black.
DISPATCH 5 to 10 working days.



Yolou Work Mesh (Silky Oak Tree)



The Yolou (Silky Oak Tree) had many versatile properties in which Australian Aboriginal people traditionally used, including making a sugary drink from silky oak flowers, dipping the whole flowerheads into water to wash the nectar off. The plant was also used to treat sore throats, earache, chest problems, flu and toothache. Additionally the prized wood was used for tools.



USER Up to 135kg
MECH Sychro - Standard
BACK Manual spine
 Back 440W x 390H



SEAT Standard Seat 490W x 465D
 Large Seat 420W to 530D
CERT. AFRDI Level 6, GECA, Supply Nation
FABRIC Aboriginal Designed Fabric or Black.
DISPATCH 5 to 10 working days.



Dee Range (Tallow Wood Tree)



Dee (Tallow-Wood Tree) bark was used for canoe-making because it is resistant to insect attack and could be made waterproof. When the Dee (Tallow-wood tree) bark was removed, it was cured over a fire and hardened by the smoke. The ends were then tied together and mud or resin from the grass tree was rubbed on the bark to waterproof the ends.



USER	Up to 135kg
MECH	3 Lever Heavy Duty
BACK	Square & Round
SIZE	460W x 480D x 860H
CERT.	AFRDI Level 6, GECA, Supply Nation
FABRIC	Aboriginal Designed Fabric or Black.
DISPATCH	5 to 10 working days.





Basalt Black Fabric X Jedess Hudson

Jedess Hudson is a descendant of the Ewamian and Western Yalanji people of North Queensland. An established Aboriginal creative, Jedess is renowned for contributing to the art and community sectors for many years. With a deep connection to country, Jedess presents traditional stories in modern mediums, through fine art, media and graphic design, with her art inspired by her connection to traditional places and stories in far north Queensland.

Growing up Jedess was taught to be aware of her surroundings especially in nature and analyse the things that make up our diverse landscape. On her creative journey Jedess has continued to draw deeply from her traditional homelands. The land, seasons, bush tucker, flora and fauna are aspects that are inspired and incorporated into her art practice.

Jedess is an established artist, member of the Indigenous Art Code and shares a vision with YINDI for embracing cultural storytelling in ways that improve connection and preserve culture for Aboriginal and Torres Strait Islander families and communities.

Basalt Black Fabric design was created by Jedess Hudson, inspired by the basaltic rocks which are native to the landscape on her traditional homelands of Ewamian and Western Yalanji country in Far North Queensland.

Aboriginal people's resourcefulness and ingenuity were evident in their use of basaltic rocks for various purposes. These rocks, known for their density and durability, were crafted into tools like cutting blades, scrapers, and spearheads, essential for hunting, food preparation, and daily tasks.

Additionally, basaltic rocks were utilized as grinding stones to process seeds, nuts, and pigments, serving both practical and artistic functions. Recognising Aboriginal people's skillful craftsmanship this design was created by Jedess to signify and align with NULLA's 'Butchulla Collection' as an Australian Made Indigenous Made Office Seating range leaving a lasting legacy of cultural heritage in office spaces.



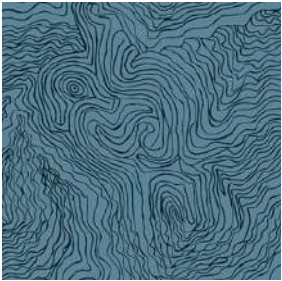
Jimmy Pike Aboriginal Designed Fabric Options



We are proud to house a collection of high-performance fabric and wall covering designs by Walmajarri Aboriginal artist, Jimmy Pike (1940-2002)

Taking flora and fauna inspiration unique to his Australian desert life, Jimmy Pike utilised whatever medium he needed to express his stories in his art, and not necessarily traditional ones. Lino printing was a favourite medium and he had a passion for the vibrancy of felt tip pens.

Having been sent photos and scans of Jimmy's artwork, Materialised designers have translated his art into repeatable prints for contemporary textile and wall coverings.



Typhography Water



Typhography Tribal



Typhography Valley



Typhography Slate



Typhography Steel



Typhography Nightfall



Typhography Meadow



Typhography Mauve



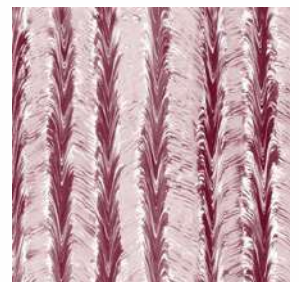
Typhography Ember



Typhography Dust Storm



Spinifex Pebble



Spinifex Mulled

Jimmy Pike Aboriginal Designed Fabric Options



Spinifex Midnight



Spinifex Golden



Spinifex Brick



Sandhills Sunhaze



Sandhills Sky



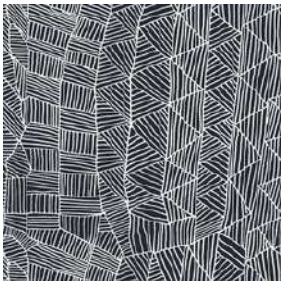
Sandhills Shadow



Sandhills Salmon



Sandhills Pebble



Sandhills Mono



Sandhills Meadow



Sandhills Grape



Sandhills Coral



Sandhills Clay



Sandhills Amber



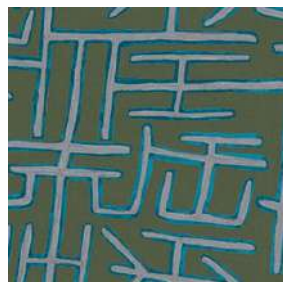
Jilji Tobacco



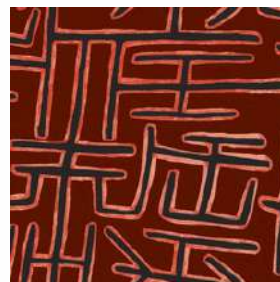
Jilji Tinder



Jilji Silt



Jilji Creek



Jilji Pyre

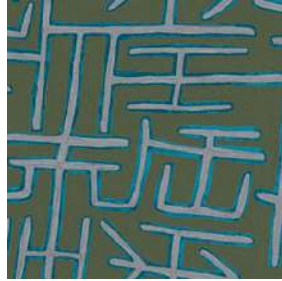


Jilji Petrol

Jimmy Pike Aboriginal Designed Fabric Options



Jilji Gold Bay



Jilji Creek



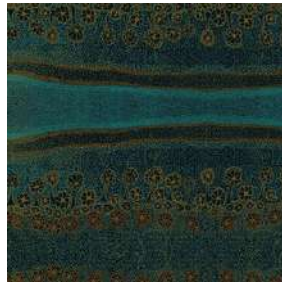
Jilji Blaze



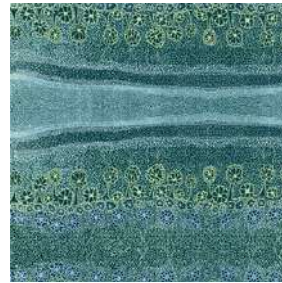
Jilji Coral



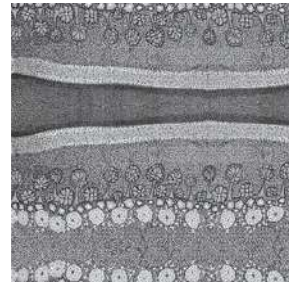
Jilji Alpine



Hailstorm Swell



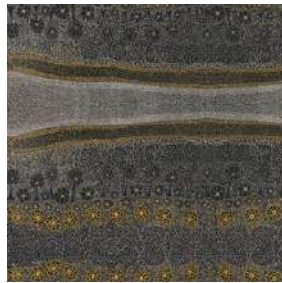
Hailstorm Plants



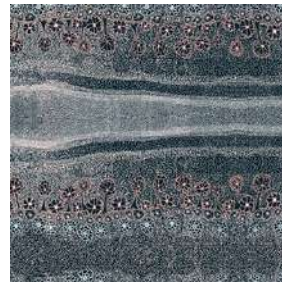
Hailstorm Mist



Hailstorm Desert Lights



Hailstorm Glitter



Hailstorm Blossom



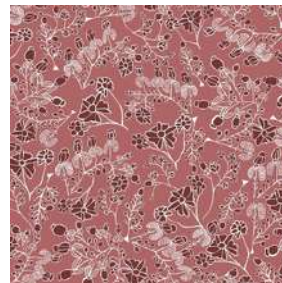
Hailstorm Berry



Hailstorm Amethyst



Desert Rose Valentine



Desert Rose Ribbon



Desert Rose Sunstone



Desert Rose Gold Bay



Desert Rose Onyx



Desert Rose Earth



Desert Rose Dawn

Jimmy Pike Aboriginal Designed Fabric Options



Desert Rose Botanical



Desert Rose Copper



Desert Rose Alpine



Desert Bloom Mulga



Desert Bloom Charcoal



Desert Bloom Granite



Desert Bloom Fire



Desert Bloom Grey Skies



Wildflowers Starry Night



Wildflowers Ephemeral



Wildflowers Desert Oaks



Wildflowers Red Sand



Wildflowers Butterfly Bush



Sand Dunes Starry Night



Sand Dunes Reflection



Sand Dunes Rainfall



Sand Dunes Mirage



Sand Dunes Grevillea



Sand Dunes Dunefields



Sand Dunes Grasslands

Jimmy Pike Aboriginal Designed Fabric Options



Japingka Feathertop



Japingka Dirt Path



Japingka Butterfly Bush



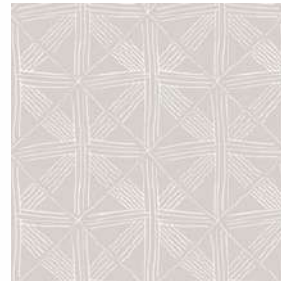
Falling Star Schrub



Falling Star Rainfall



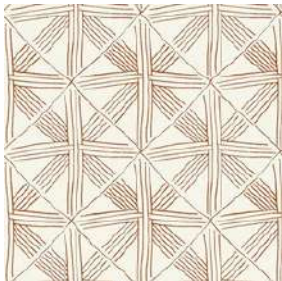
Falling Star Reflection



Falling Star Mirage



Falling Star Princess Parrot



Falling Star Grevillea



Falling Star Ghost Gum



Falling Star Feathertop



Falling Star Finch



Falling Star Ephemeral



Falling Star Butterfly Bush



Falling Star Bloodwood



Falling Star Astral



Falling Star Airglow



Falling Star Ash